

## AJ Parks & Recreation Programs-At-A-Glance

**10/4 – Renaissance Portrait Drawing** – Join us for this class on October 4 & October 11. Class will be from 6-8pm. Ages 16 years and older can participate in this activity for \$50.00. Supplies are included.

**10/4 – Kenpo Karate** – Join us on Tuesdays & Thursdays starting on 10/4. Classes will be from 6-6:45pm or 7-8pm. Ages 8 & up can participate in this activity for \$35.00.

**10/4 – Family Fitness & Game Night** – Join us on Tuesdays starting on October 4th. Games will be from 6:30-7:30pm. Ages 6 & up can participate in this activity for \$60.00 per family or \$30.00 per individual.

**10/4 – Women’s Racquetball** – Join us and Mimi Judah on Tuesday evenings starting October 4th at Prospector Park for Women’s Racquetball. Classes will be from 7:45-8:45pm. Women ages 16 and up can participate in this activity for \$50.00.

**10/6 – Ballet & Tap Classes** – Join us on Thursdays evenings beginning October 6th for various levels and ages of tap and ballet classes. Class times vary from 3pm-7pm. Ages 3 & up can participant in various activities for \$80.00-\$85.00.

**10/6 – Creative Communications Using Graphics** – Join us for this class on October 6th. Class will be from 5:30-8:30pm. Ages 16 years and older can participate in this activity for \$50.00.

**10/7 – Microsoft Basic Excel** – Join us for this class on October 7th. Class will be from 9am-Noon. Ages 16 years and older can participate in this activity for \$50.00.

**Follow A.J. Parks & Recreation** – We are on Facebook and Twitter! Follow us @AJParksandRec on Twitter and “Like” our page on Facebook and stay up to date with upcoming events and programs. For more information, visit us at [www.ajcity.net](http://www.ajcity.net) or call us @ (480) 983-2181.

## Big Plays Doom Wolfpack In Key 2A Game

By Russell Baker  
The News

The Apache Trail Wolfpack lost to 2A division opponent Mohave Accelerated Learning Center (M.A.L.C.) in a close game last Friday at Prospector Park. With the 28-22 loss the Wolfpack falls to 2-3 this season, but more importantly, 0-2 in 2A play. Despite the loss Apache Trail played a strong game, leading 14-6 at the half before M.A.L.C. was able to take the lead away with big plays in the 2nd half.

Apache Trail senior Kris Stein took the reins this week as he moved from running back to quarterback for the game. As QB, Stein was able to complete three of his 10 attempts on Friday for a total of 55 yards, including a 13-yard touchdown pass to receiver Joe Ramos, his only catch on the day. The other two completions were both caught by last week’s QB, Brian Gutierrez, who had 42 yards receiving and a two-point conversion in the contest.

On the ground, Stein found much more success, rushing 18 times for 116 yards and two scores. Stein has rushed for just under 500 yards on the season, finding the end zone six times. Also involved in the running game were Shane Wlotzko, who carried the ball four times for 30 yards, and Joe Ramos, who added another four carries for 14 yards including a two-point-conversion of his own.

The Wolfpack defense started the game very strong on Friday. After allowing the Patriots to score on their first possession, Apache Trail held them scoreless through the rest of the half and much of the 3rd quarter. Wlotzko had a game high 12 tackles from his linebacker posi-

tion to lead the Wolfpack defense. Both Apache Trail quarterbacks came up big on defense as well. Gutierrez finished with seven tackles, two assists and an interception, while Stein racked up eight tackles, two assists and an interception of his own.

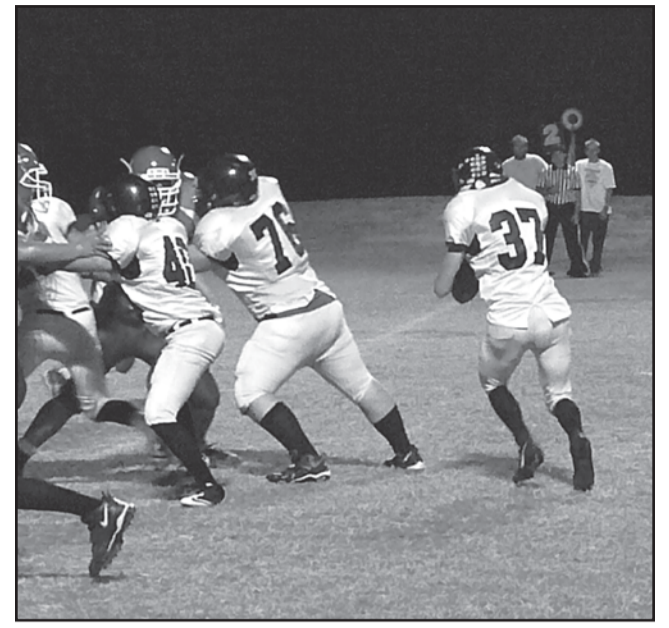
Kevin Apodaca had six tackles in the contest, Steven Hoelbl ended with five tackles and three assists, Kyle Sholz came up with five tackles and two assists, while Cole Pardon added five more tackles including two sacks. Del Matthews was in on four stops with one sack, Robert Scott, Sean Luc Wyatt, and Alan Keeton all walked away with three tackles and Ramos added two more tackles for the Wolfpack defense.

The Apache Trail defenders played very well throughout the game, despite allowing nearly 300 yards of offense to the Patriots. Unfortunately the defense was beat four times for big plays.

M.A.L.C.’s first score of the game came on a 25-yard scramble after heavy pressure on the QB. The other three scores all came in the second half, all of them going for at least 45 yards. These few lapses proved to be too much for the Wolfpack to handle as they had more and more trouble moving the ball on offense as the game wore on.

Adding to their difficulties, Apache Trail played most of the 2nd half on defense after allowing two onside recoveries late in the game, limiting their offensive opportunities.

Last year, Apache Trail lost big to M.A.L.C. in a 42-6 game, and the Patriots went on to play in the 2A state Championships. However this year was a much different story. The Wolfpack came very close to pulling



Apache Trail quarterback Kris Stein follows the block of teammates Steve Hoelbl (#76) and Del Matthews (#40) for a nice gain in Friday’s game. Stein rushed for 116 yards but big plays from Mohave Accelerated Learning Center proved costly in a 28-22 M.A.L.C. victory. (photo by Russell Baker)

out a “W,” despite giving up four long touchdowns and allowing M.A.L.C. to recover three onside kicks.

Apache Trail may be 0-2 in their division, but they have played two tough opponents over the last two weeks. If they can find a way to mitigate their mistakes this team

may still have some postseason potential. Next week, the Wolfpack take on their third straight divisional opponent, the 1-4 Summit High Bulldogs on Friday, October 7. Apache Trail is again at home at Prospector Park, with kickoff slated for 7:00 p.m.

## EVG&HA

East Valley Gastroenterology & Hepatology Associates

**Now Open in Mesa!**

10238 E Hampton Ave. Ste. 205  
Mesa, AZ 85209

Call To Schedule an Appointment:  
480-786-6655

Visit us Online at  
[www.eastvalleygastro.com](http://www.eastvalleygastro.com)

**\$12 per person FALL/WINTER GARDENING**  
Saturday, October 8th, 9-11am  
Held by Desert Ecologist Cyndi Ruehl

**DESERT DIRT INTO BLACK GOLD**  
Saturday, October 8th, 1-3pm  
Held by Don Titmus, practicing Permaculturist & Horticulturist

Smiling Dog Learning Center

**\$15 per person**

Seating is limited so please **RSVP** by Oct. 7th. Call Dori at 480-288-8749 or email [Dori@smilingdoglandscapes.com](mailto:Dori@smilingdoglandscapes.com)

*Now Open on Saturdays!*

## B&H AUTO REPAIR AND TOWING

formerly of Dr. Dan’s Auto Repair

**Oil Change \$24.95\***

\*Includes 29 point inspection & tire rotation.

**455 S. Meridian Rd. • Apache Junction**  
**480-288-0511**

Owner Howard

## IMAGINE PREP

**Education. Empowered.**

- ✓ TUITION-FREE, college prep middle and high school
- ✓ Early college initiative via dual enrollment at Central Arizona Community College
- ✓ Technology enriched learning for success in college and the workplace
- ✓ Sports, clubs, and enrichment opportunities
- ✓ Bus transportation available throughout the East Valley
- ✓ ACCREDITED BY NCA/AdvancED
- ✓ “Performing Plus” school...ENROLLING NOW!

**Imagine Prep at Superstition**  
1843 W. 16th Ave. Apache Junction, AZ 85120  
(480) 355-0530 [ImaginePrep.com](http://ImaginePrep.com)

Hours: Mon-Sat 7:30am to 5:30pm

**WE ACCEPT COMPETITORS' COUPONS**

11140 E. Apache Trail, Apache Junction  
**480-354-8585**  
**BRAKEMASTER.COM**

**LIFETIME BRAKES\***

**DELUXE LIFETIME\* Brakes \$99**

Plus \$2.50 Disposal Fee  
And Up

**Includes:**

- Labor & standard Bendix brake pads
- Machine rotors & drums
- Clean & pack wheel bearings where applicable

**Includes semi-metallic pads! Includes Parts & Labor**

\*Pads only • Per axle • Rear disc extra 4X4, Rear Discs & Pressed Rotors, and some other grades of pads extra. Exp. 10-9-11 AJN

**BASIC LUBE, OIL & FILTER**

**\$18.95**

**EXPRESS** Includes:

- Up to 5 quarts of 5w30 or 5w20 Stop. Go. Pennzoil\*
- Pennzoil Oil Filter Exp. 10-9-11 AJN

Most vehicles. Add \$2.50 for disposal fee.

**A/C FULL SERVICE**

Stay Cool & Save Money!

**\$19.95**

**Includes:**

- Inspect A/C compressor (visual)
- Check high and low pressure
- Inspect belts and hoses
- Check system for operation Exp. 10-9-11 AJN

Add \$2.50 for disposal fee

Freon not included • Most vehicles

**FREE BRAKE INSPECTION MOST VEHICLES**

### V-Ball, continued from page A-7

With the 8-4 tournament record, Apache Junction improved to 15-19 overall. They stayed hot this past week, winning two of three regular season matches, beating Mesa Skyline and Poston Butte, but dropping a close battle with Florence and are now 17-20 overall.

In the 25-19, 25-14, 25-15 win over Skyline, Jimenez had 19 kills and eight digs and Reid came up with 20 digs and had seven service aces.

In the 25-13, 25-17, 25-9 win over Poston Butte, Jime-

### J.V. Results

The junior varsity team defeated Skyline 26-24, 25-19, lost to Florence 25-20, 25-21, and lost a close one to Poston Butte, 21-25, 25-23, 17-15 (tie-breaker).

### Freshmen Results

The AJHS freshmen team won all three matches, beating Skyline 25-7, 25-18, downing Florence 23-25, 25-12, 15-10 (tie-breaker), and defeating Poston Butte 25-18, 25-21 to improve to 11-1 overall.

**TREASURE Chest**

GRANITE PIT

OPEN Mon.-Fri. 6 a.m. - 4 p.m.

**DELIVERY AVAILABLE!**

Landscape Rock  
Including Boulders

**480-983-1606** Look For Big Wheel

**2nd Annual PANCAKE BREAKFAST**

Hosted by the Apache Junction Fire Fighters Local 2260 & Apache Junction Fire Fighter’s Ladies Club

**October 8, 2011**  
**7am-10:30am**

**Apache Junction Fire Station 264**  
**7557 E. Hwy 60 • Gold Canyon**

**\$5.00 at the door** **50/50 RAFFLE**

All proceeds will go to the **Susan G Komen of Arizona Foundation**

**Judy Holder Insurance Agency**

Insuring The East Valley Since 1970

See us for your... • Home • Auto • Life • Business • Bonds

**MEDICAL INSURANCE**

**WE INSURE VACANT HOMES**

Representing These Fine Companies.

Kemper  
A Liberty Business

Auto-Owners Insurance  
-It's How We Service-

Colorado Casualty

THE HARTFORD

PROGRESSIVE

BlueCross BlueShield of Arizona

Allied Insurance

FOREMOST

cibc

“QUOTES BY PHONE OR YOU CAN VISIT OUR OFFICE”

480-982-0273 • 288 N. Ironwood #111 • AJ 85220  
[www.jhins.net](http://www.jhins.net)

**We're Still HERE!** *The same great team you've trusted for over 20 years!*

**YOUR MAJOR BRAND HEADQUARTERS!**

## TOYO

**APACHE JUNCTION TIRES & SERVICE**

**Lube, Oil & Filter Change**

**\$19.99** COUPON

With **FREE** Four Tire Rotation & 20 Point Vehicle Inspection!

Please call for appointment • Most Cars • Up to 5qts. 10W30 Bulk Oil • New Oil Filter • Chassis Lube • With Coupon Environmental Waste Oil charge \$2.00 per vehicle will be added • Other Oil Weights \$8.00 extra per vehicle Pickups, Vans & SUV's \$2.00 extra per vehicle • 3/4 Ton Pickups & Custom Vans \$4.00 extra AJN Expires 10/9/11

**20 YEARS LOCALLY OWNED!**

## APACHE JUNCTION TIRES & SERVICE

Apache Junction • 740 West Apache Trail  
**480-982-8489**

HOURS: M-F 8am-5:30pm Sat 8am-2pm please call for appointment \*STATE OR LOCAL TAXES OR SURCHARGE FOR ENVIRONMENTAL PROTECTION WILL BE AN EXTRA CHARGE\*

**WE BUY - Batteries, Copper, Brass, Aluminium, Radiators**

## CASH FOR CANS

**Aluminum Cans 90c/lb.**

**WE WILL MATCH COMPETITORS PRICE WITH CURRENT INVOICE**

**JOHNSON RECYCLING**

Behind Red Mountain Auto Sale

Main/Trail

**480-338-0759**